

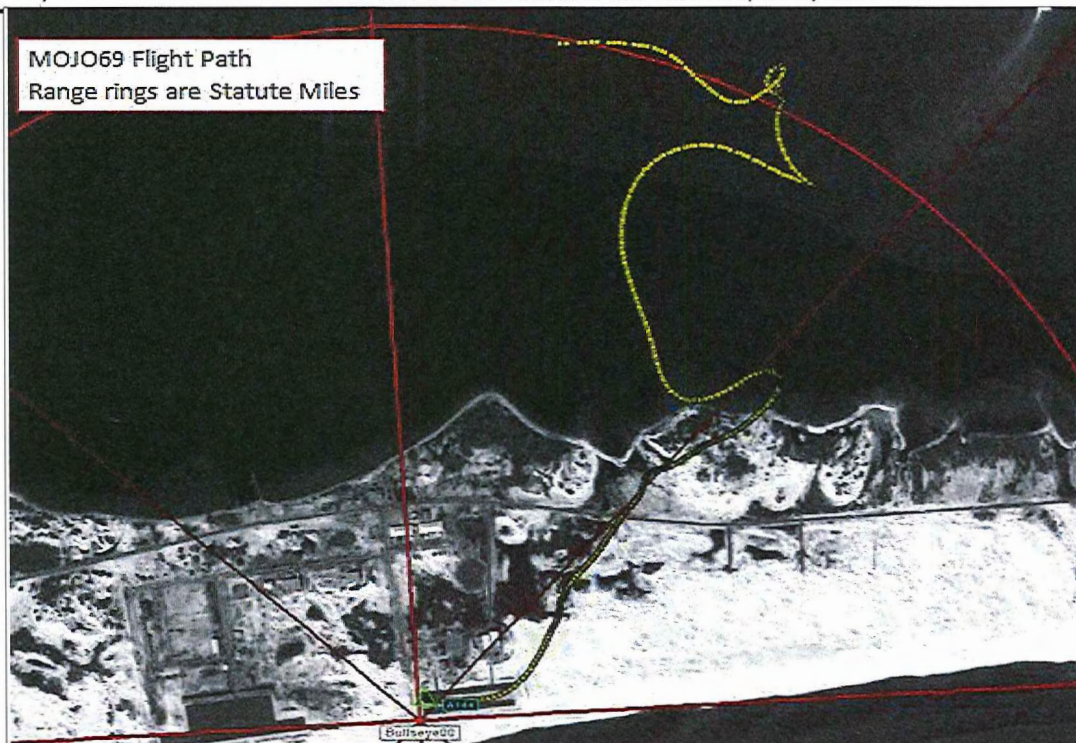
The following Chart represents the approximate times of communications associated with some of the aircraft a parameters that surrounded the UH-60M, Tail Number 13-20624, accident that occurred on 10 March 2015 at approximately 20:21:38 (Local) Central time. The Aircraft was on an approved training mission operating in Restricted Airspace, R 2915B (A-16), located at Eglin AFB in Ft Walton Beach, Florida.

Crew Communication Information

Pilot in Command	CW4 George Wayne Griffin (G-Wayne)	Indicated by "WG" under crew Column
Co-Pilot	CW4 George David Strother	Indicated by "DS" under crew Column
Crew Chief #1	SSG Lance Bergeron	Indicated by "LB" under crew Column
Crewchief #2	SSG Thomas Frolock	Indicated by "TF" under crew Column
Chalk 2	██████ a second UH-60M that was part of a flight of two with MOJO 60--	Indicated by chalk 2 under crew column
Marine PAX	Marine (OIC) in the back of MOJO 69, accident aircraft.--	Indicated by MARSOC under crew column
██████	Safety boats working the proposed drop zone in the Santa Rosa Sound--	indicated by ██████ under crew column

Chart

	Approximate time Aircraft lifts off from pad at A15
	Comments made by crewmembers that indicated the environmental conditions were worse than expected (Begin approximately 27 seconds after takeoff)
	Comments made by crewmembers that indicated they appear to have become Spatially Disoriented
	Comments made by crewmembers that indicate at least one crewmember has become spatially disoriented

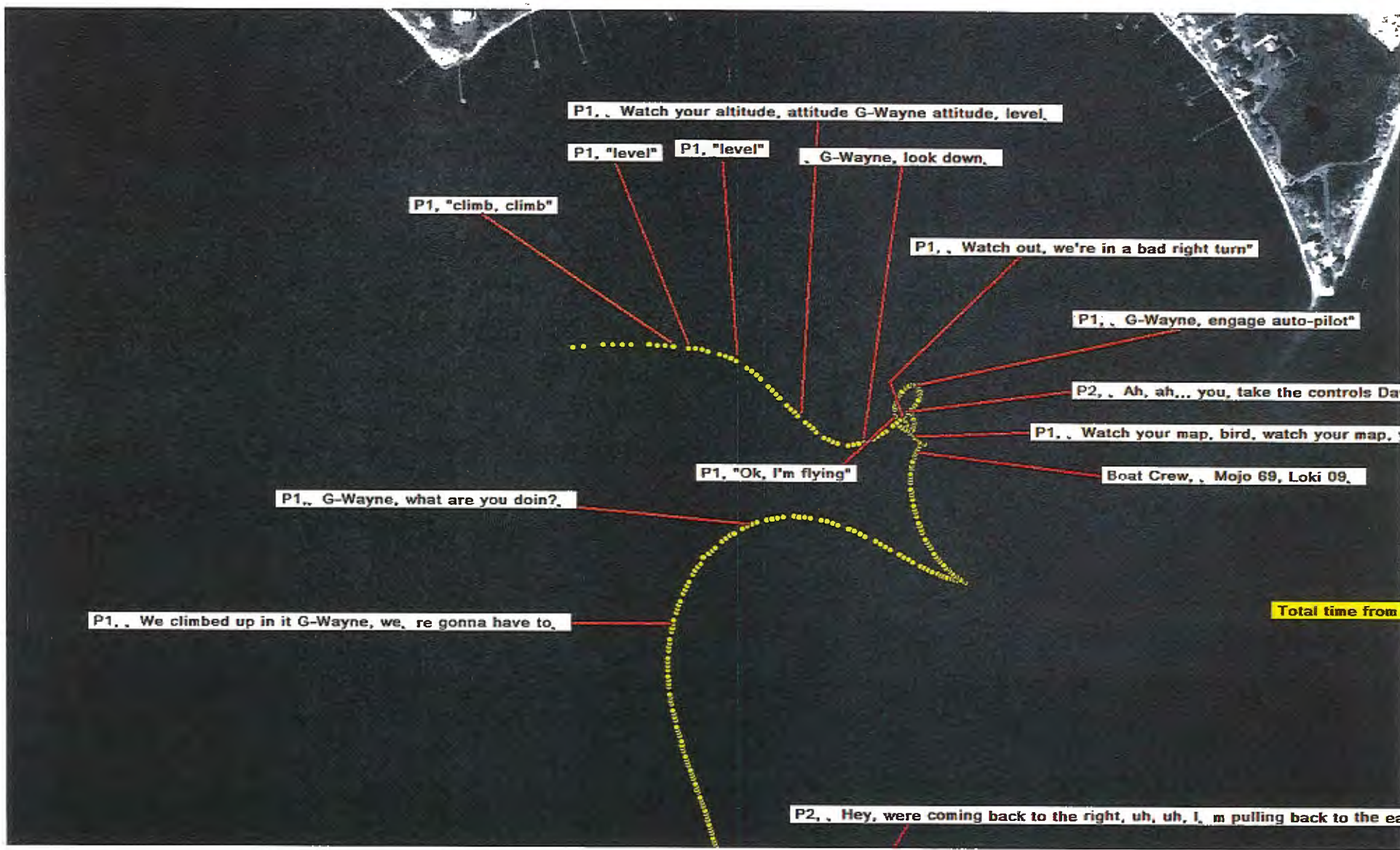


TAS	Altitude Pressure	Altitude Radar	Eng 1 Torque	Eng 2 Torque	Ground Speed	Local Hour	Local Minute	Local Second	Vertical Speed	Transcripts	Crew
0	-156	0	0	0.0625	0	20	10	46	0	"Up Left Rear"	LB
0	-158	0	0	0.0625	0	20	10	58	0	"All right starters dropped guys, we got a ggod start, we got pressure, pressure, pressure coming hot on two"	DS
0	-160	0	0	0.0625	0	20	11	2	0	"Clear on 2"	TF
0	-161	0	0	0.0625	0	20	11	7	0	"Engage ????"	DS
0	-160	0	11.6875	0.0625	0	20	11	13	0	"I'm gonna dump fuel, you ready boss, here we go"	DS
0	-161	0	11.4375	0.0625	0	20	11	15	0	"I'm ready"	WG
0	-163	0	9.625	5.9375	0	20	11	26	-16	"?????and enter"	DS
0	-164	0	9.0625	5.5625	0	20	11	30	0	"Pressure on the rise we got it good, there she goes, about 60 starter dropped out, Hey, were above 63, within 3, without avoidance ranges, 20, 40, 60, 90 we have adequate oil pressure, transmission oil pressure, two hydraulic lights are extinguished, back up pump is coming to auto, guys if you all would"	DS
0	-163	0	9.0625	5.375	0	20	11	31	0	"Coming in on the left"	LB
0	-165	0	8.9375	5.4375	0	20	11	32	0	"Coming auto"	DS
0	-163	0	8.625	5.6875	0	20	11	34	0	"Chocks, droops and doors"	DS
0	-160	-1	8.25	4.6875	0	20	11	42	0	"Roger"	LB
0	-158	-1	14	9.9375	0	20	11	44	0	"There goes the droop"	TF
0	-158	-1	13.875	11	0	20	11	45	0	"Roger Bro"	DS
0	-158	-1	15.5	12	0	20	11	46	0	"Pull the chock"	LB
0	-159	-1	36.8125	25.625	0	20	11	53	96	"Coming in right"	TF
0	-158	-1	37.5625	38.375	0	20	11	56	48	"One and two 20 fly, were in direct, were 1335 on fuel"	DS
0	-161	-1	19.0625	19.9375	0	20	12	27	16	"Well we're all ready to rock in the back"	LB
0	-162	-1	18.8125	19.8125	0	20	12	30	16	"Alright"	WG
0	-162	-1	18.6875	19.6875	0	20	12	31	48	"Mike"	DS
0	-162	-1	19	19.875	0	20	12	33	-32	"Brakes whenever you are ready G Wayne"	DS
0	-162	-1	19.375	20.25	0	20	12	35	-32	"Brakes to release, waiting on number uh, Chalk 2 to start, they are still fucking off over there."	WG
0	-168	-1	18.8125	19.4375	0	20	12	41	64	"Right Before Takeoff still good"	DS
0	-169	-1	19.1875	20.0625	0	20	12	42	0	"Secure Right Rear"	TF
0	-167	-1	18.9375	19.8125	0	20	12	44	48	"PAX Secure"	TF
0	-159	-1	18.3125	19.5625	0	20	12	46	288	"Ready Left Rear"	LB
0	-171	-1	18.8125	19.4375	0	20	12	56	80	"Clear the FCC flight codes"	WG
0	-166	-1	18.8125	19.6875	0	20	12	58	160	"All right I'm sorry"	DS
0	-169	-1	19.125	19.9375	0	20	12	59	128	"Alright I did it"	WG
0	-170	-1	18.8125	19.5	0	20	13	30	-32	"Alright they are starting to crank now"	WG
0	-168	-1	18.9375	19.6875	0	20	13	36	-64	"Dave can you get that APU off"	WG
0	-159	-1	19.125	19.5625	0	20	13	42	128	"Not the Generator, there ya go"	WG
0	-167	-1	19.0625	19.6875	0	20	14	6	96	"Hey, we got the same guy we had on the headset all day?"	DS
0	-163	-1	18.5625	19.5625	0	20	14	10	48	"Yeah, [redacted] on the headset"	TF
0	-162	-1	18.875	19.5625	0	20	14	11	112	"OK, [redacted] on"	DS
0	-164	-1	18.9375	19.3125	0	20	14	15	-64	"Yep, I'm here"	[redacted]
0	-161	-1	19.125	19.9375	0	20	14	18	64	"Ah"	DS

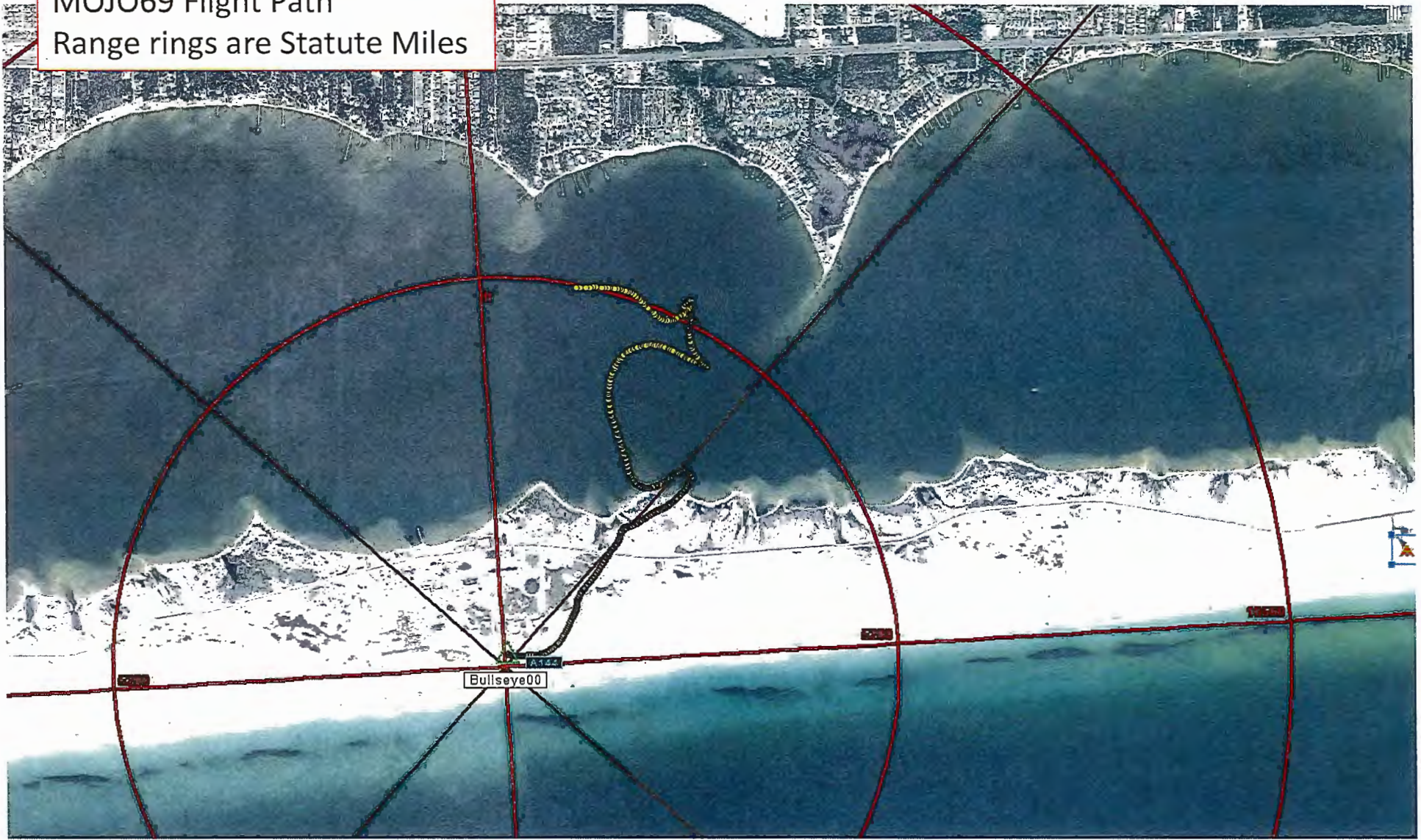
TAS	Alt Pressure	Altitude Radar	Eng 1 Torque	Eng 2 Torque	Ground Speed	Local Hour	Local Minute	Local Second	Vertical Speed	Transcripts	Crew
0	-168	-1	18.6875	19.5	0	20	14	19	0	"It's gonna be a little bit slower, Ill give you a 30, a one minute and a thirty if you are cool with that"	DS
0	-167	-1	18.4375	19.125	0	20	14	24	-80	"Yep, sounds good"	
0	-171	-1	19.4375	20.6875	0	20	14	28	80	"We got flames coming out if that exhaust man"	WG
0	-167	-1	18.5625	19.25	0	20	14	50	16	"And if you can again, just like the other night, about 15 feet off the water"	
0	-169	-1	19.125	19.5625	0	20	14	53	0	"Bout 15 feet, roger"	WG
0	-166	-1	18.8125	19.9375	0	20	15	15	-16	"That's Purdy"	LB
0	-168	-1	19	19.8125	0	20	15	21	-16	"Sand is making some sparks in that rotor system over there"	TF
0	-168	-1	19.125	19.4375	0	20	15	24	16	"Yeah it is"	WG
0	-170	-1	19	19.5625	0	20	15	27	-128	"St Elmos fire"	TF
0	-173	-1	19.5	19.8125	0	20	15	34	-80	"Aw they blew it all away"	WG
0	-167	-1	18.6875	19.4375	0	20	15	47	0	"Ok G Wayne your 126.5 that is uh"	DS
0	-164	-1	18.6875	19.8125	0	20	15	50	32	"That's Hurlburt Tower"	WG
0	-169	-1	18.8125	19.875	0	20	15	51	-32	"Hurlburt tower, Roger"	DS
0	-168	-1	18.9375	19.875	0	20	15	53	0	"Number 2 is [REDACTED]"	WG
0	-164	-1	19	19.9375	0	20	15	54	0	"I'm in"	TF
0	-164	-1	19.1875	19.8125	0	20	15	54	32	"What"	DS
0	-166	-1	19.125	19.6875	0	20	15	55	0	"Number 3 is tower"	WG
0	-165	-1	18.9375	19.6875	0	20	15	56	-96	"You wanna get in touch with tower once we start moving around"	DS
0	-165	-1	19.5	20.125	0	20	15	59	-16	"Once we uh, not till we start down the beach... back toward uh Destin if we decide to make that move."	WG
0	-175	-1	19.125	19.5625	0	20	16	4	-112	"Gotch my brother"	DS
0	-162	-1	18.6875	19.375	0	20	16	23	80	"Bail looks up to me"	WG
0	-168	-1	18.625	19.5	0	20	16	30	16	"We're ready to give it a go"	Chalk 2
0	-160	-1	18.75	19.9375	0	20	16	32	80	"All right I am gonna pick up and turn around then I'm (inaudable)"	WG
0	-161	-1	18.5625	19.6875	0	20	16	35	16	"Roger"	Chalk 2
0	-161	-1	18.6875	19.4375	0	20	16	36	32	"Clear right and up"	TF
0	-166	-1	19.5625	19.4375	0	20	16	38	-64	"Clear left and above"	LB
0	-222	0	33.25	33.375	0.25	20	16	40	-592	"Straight up"	DS
0	-235	0	44.6875	44.1875	0.25	20	16	40	-800	"Tails coming right"	WG
0	-237	0	50.3125	50.0625	0.25	20	16	41	-816	"Tails clear right"	TF
0	-238	2	77.8125	76.3125	0.75	20	16	43	-656	"Nose Left"	LB
0	-230	16	75.4375	76	1	20	16	52	96	"Wow that's a lot a sparks"	LB
36.125	-187	42	63.9375	64.625	22.25	20	17	7	112	"Gee it's dark as "explicative" That don't help none"	WG
23.625	-132	55	56.1875	54.875	24.75	20	17	12	256	"No, it didn't"	TF
0	-118	81	56.3125	58.6875	20.75	20	17	24	-112	"Wow, its really dark"	LB
0	-107	80	60.5625	60.75	18.25	20	17	27	32	"Its really shitty"	WG
0	-184	44	74.375	76.625	5.25	20	17	37	-480	"We're gonna take it real slow guys"	WG
0	-201	37	77.875	78.1875	6.5	20	17	39	-496	"Yeah"	WG
0	-205	34	73.75	75.0625	8.25	20	17	41	-272	"Probably hard to find them boats"	LB
26.125	-177	52	76.9375	76.5625	18	20	18	5	0	"Theres wires somewhere over there next to the road right?"	TF
29.5	-161	63	66.875	69.6875	19.5	20	18	8	368	"Yep we're passin over the road"	DS

TAS	Alt Pressure	Altitude Radar	Eng 1 Torque	Eng 2 Torque	Ground Speed	Local Hour	Local Minute	Local Second	Vertical Speed	Transcripts	Crew
30.5	-148	76	73.9375	73	19.25	20	18	10	416	"Roger"	TF
24.125	-121	104	65.875	67.875	17	20	18	14	400	"Yeah I got em in sight"	LB
21.125	-104	109	57	56.8125	16.75	20	18	16	464	"We are high enough for the wires"	LB
0	-100	100	64.9375	61.0625	15.25	20	18	19	96	"Yep"	WG
16.125	-126	85	70.75	71.3125	12.5	20	18	22	-256	"Passin almost right over the pole"	LB
0	-155	78	72.75	74.1875	10.25	20	18	26	-384	"Roger"	WG
0	-155	73	72.5625	73.8125	10.75	20	18	28	-112	"Let me know when ya'll pass up those poles"	Chalk 2
14.75	-153	78	74.875	74.4375	11	20	18	31	32	"What Altitude we got"	Chalk 2
15.875	-153	81	74.4375	73.6875	10.75	20	18	33	16	"Alright you're clear of the wires"	LB
16.875	-147	86	68.25	70.75	10.75	20	18	36	80	"We're at 90 feet guys"	DS
20.5	-142	88	72	70.9375	10.5	20	18	39	80	"By the way I got chalk 2 stag left"	LB
19.875	-141	90	64.875	65.25	10.25	20	18	43	32	"Uh lets call em uh, 8 o clock, one and a half to one"	LB
13.375	-150	73	63.6875	64.4375	8.75	20	18	48	-96	"You got us decending?"	DS
0	-157	65	64.125	64.6875	7.25	20	18	49	-256	"yeah"	WG
0	-160	63	64.1875	64.75	7	20	18	50	-256	"Coming Down"	WG
0	-176	49	64.625	65.125	5	20	18	52	-416	"say I am going to come down and uh, just for passes, us past those poles over there"	WG
0	-205	38	84.75	88.75	5	20	18	56	-512	"Yeah--you just"	DS
24.625	-185	45	69.9375	70.625	12.75	20	19	5	-128	"Hey [redacted]--theres some trees out there, on my left door watch out for those"	WG
29.875	-182	49	69.4375	73.375	15.5	20	19	9	16	"Put your search light on ral quick"	chalk 2
24.75	-166	59	68.75	67.125	13.75	20	19	12	256	"Gotcha"	chalk 2
24.5	-159	64	63.25	63.625	14.25	20	19	15	160	"Oh no you kill (inaudable)"	DS
25.625	-155	59	63.5625	63.625	14	20	19	17	144	"Oooh"	DS
20.125	-158	52	64.875	65	14.5	20	19	19	-64	"We got poles right under those trees okay"	DS
21.375	-164	46	69.125	67.125	14.75	20	19	22	-32	"Were over the water in five guys"	DS
27.625	-166	52	67.5625	71.8125	15.5	20	19	26	32	"Alright just keep a look on my radar altimeter"	WG
27.75	-148	67	62.9375	62.8125	16.25	20	19	29	352	"Roger That"	DS
22	-145	74	63.75	62.125	17	20	19	33	0	"Were over the water"	LB
28.5	-154	75	67	66.9375	15.25	20	19	39	-80	"Thankyou"	DS
28.5	-153	75	66.375	66.5625	15.25	20	19	40	-80	"Yeah its to dark to se the "expicative" water"	WG
23.875	-147	83	67.0625	67.625	12	20	19	45	64	Tell him to uh, get his, take his uh, position lights outta flash, put em on staeady"	TF
0	-163	84	74.6875	75	11.75	20	19	50	-240	"Turn your position lights out of flash if you would?"	DS
0	-149	91	89.375	90.25	20.25	20	19	55	272	"Do you want them on?"	chalk 2
0	-116	108	95.6875	97.0625	22.5	20	19	57	704	"Hey, were coming back to the right, uh, uh, I'm pulling back East"	WG
0	-52	143	97.5	97.875	27.5	20	20	0	1168	"Hey, put in, uh, 4>>>Dave put in 482 in our, uh"	WG
0	43	238	99	99.8125	26.75	20	20	5	1248	"Uh, were putting our position lights on really quick"	chalk 2
0	89	287	96.625	97.5625	24.75	20	20	7	1344	"482"	DS
0	129	330	75.6875	74	25.25	20	20	8	1280	"Yep"	WG
0	137	335	70.0625	65.5625	25.5	20	20	9	1264	"Can you still see me [redacted]"	WG
0	142	367	84.3125	83.5	29.75	20	20	11	656	"Nope"	Chalk 2
0	159	406	83.375	84.0625	38.25	20	20	17	272	"Yep"	Chalk 2
0	247	444	61.4375	59.4375	40.25	20	20	23	240	"Is it in there?"	WG

TAS	Alt Pressure	Altitude Radar	Eng 1 Torque	Eng 2 Torque	Ground Speed	Local Hour	Local Minute	Local Second	Vertical Speed	Transcripts	Crew
0	247	444	61.5625	59.625	40.5	20	20	23	160	"Yeah I don't have nothing bro"	DS
0	245	441	70.875	71.125	42.75	20	20	25	-48	"482 and nothing not there"	WG
0	254	443	72.3125	73.125	47.75	20	20	27	144	"yeah you should be in"	DS
0	262	446	89.3125	91.25	49.5	20	20	29	272	"I can't see anything outright"	TF
0	287	459	79	74.125	55.25	20	20	31	512	"We climbed up in it G-Wayne, we gonna have to"	DS
0	291	459	72.875	72.8125	55.5	20	20	32	544	"Oh Yeah"	WG
0	319	455	96.3125	96.125	60	20	20	34	688	"Wheres our airspeed?"	D5
0	323	454	97.3125	97	60.5	20	20	35	640	"I got the altimeter setting"	DS
0	323	440	109.5	111.6875	67.25	20	20	37	400	"G-Wayne"	DS
0	283	425	107.75	110	71	20	20	38	336	"G-Wayne, what are you doing?"	DS
33.875	114	377	140.875	140.688	75.5	20	20	40	128	"I don't have anything"	WG
74.875	138	358	139.25	137.813	78.25	20	20	41	-16	"Climb, Climb, Climb"	DS
70.125	206	433	104.375	105.8125	56	20	20	44	624	"Oh, stop, stop, top, stop"	WG
58.75	246	500	104.25	104	42.75	20	20	45	1264	"Mojo 69, ██████"	Loki 09
0	571	862	116.25	115.5	16.25	20	20	50	3824	"You got it"	D5
0	637	931	130.438	129.875	28	20	20	51	3584	"Yeah"	WG
0	742	1046	131.188	131.25	44.75	20	20	53	2928	"I got nothin"	LB
0	797	1099	123.563	124.188	48	20	20	55	2720	"Okay I got your alt P set"	D5
21.75	989	1284	90.4375	91.125	27.5	20	20	59	2496	"Where you at G-Wayne"	Chalk 2
0	999	1294	89.8125	90.6875	26.25	20	21	0	2384	"Can I put my light on"	Chalk 2
0	1050	1344	90.1875	90.875	13.75	20	21	1	1984	"I'm climbin up"	WG
0	1060	1348	92.0625	92.3125	12.5	20	21	2	1888	"Mojo 69, ██████"	Loki 09
23.125	1141	1432	76	72.875	14	20	21	6	1344	"Watch your map bird, watch your map, your spinnin"	DS
25.625	1176	1453	55.4375	54.6875	19	20	21	8	1072	"I got it, I got it"	WG
0	1184	1455	45.125	45.5	17.5	20	21	10	752	"G-Wayne, Don't fight it"	DS
0	1160	1443	51.625	49.25	14.25	20	21	11	480	"G-Wayne"	DS
0	1156	1443	57.9375	54.25	13	20	21	11	448	"Ah, ah<<<you take the controls Dave"	WG
0	1203	1393	135.063	135.875	20.5	20	21	15	1152	"I got it"	DS
0	1179	1401	137.125	136.625	18	20	21	16	1152	"Watch the, watch the collective Dave"	GW
0	1159	1432	124.063	124.313	30.75	20	21	18	784	"Okay I'm flying"	DS
0	1171	1456	125.875	125.688	33.5	20	21	19	864	"Watch the collective Dave"	GW
0	1194	1472	97.25	99.75	31.5	20	21	20	1280	"Alright"	DS
0	1217	1481	108	105.375	25	20	21	21	1440	G-Wayne, engage autopilot	DS
0	1235	1483	113.1875	110.5	18.25	20	21	23	1072	"I got...yeah"	WG
0	1249	1662	127.563	125.563	27	20	21	24	592	"Watch out we're in a bad right turn"	DS
0	1180	1686	132	131.625	55.5	20	21	26	160	"Yep"	WG
0	1179	1407	135.125	134.5	66.75	20	21	27	-224	G-Wayne-Look Down"	DS
55.5	1012	1315	73.6875	72.75	64.75	20	21	30	448	Watch your altitude, attitude G-Wayne attitude, level"	DS
64	746	1686	130	132.75	82	20	21	33	-1952	"Level"	DS
111.75	526	1441	126	127.313	81.25	20	21	35	-1968	"Level"	DS
116.125	510	1026	129.125	132.688	84.75	20	21	35	-2032	"Climb, Climb"	DS
159.5	102	137	113.438	115.063	139	20	21	38	-3856	IMPACT	

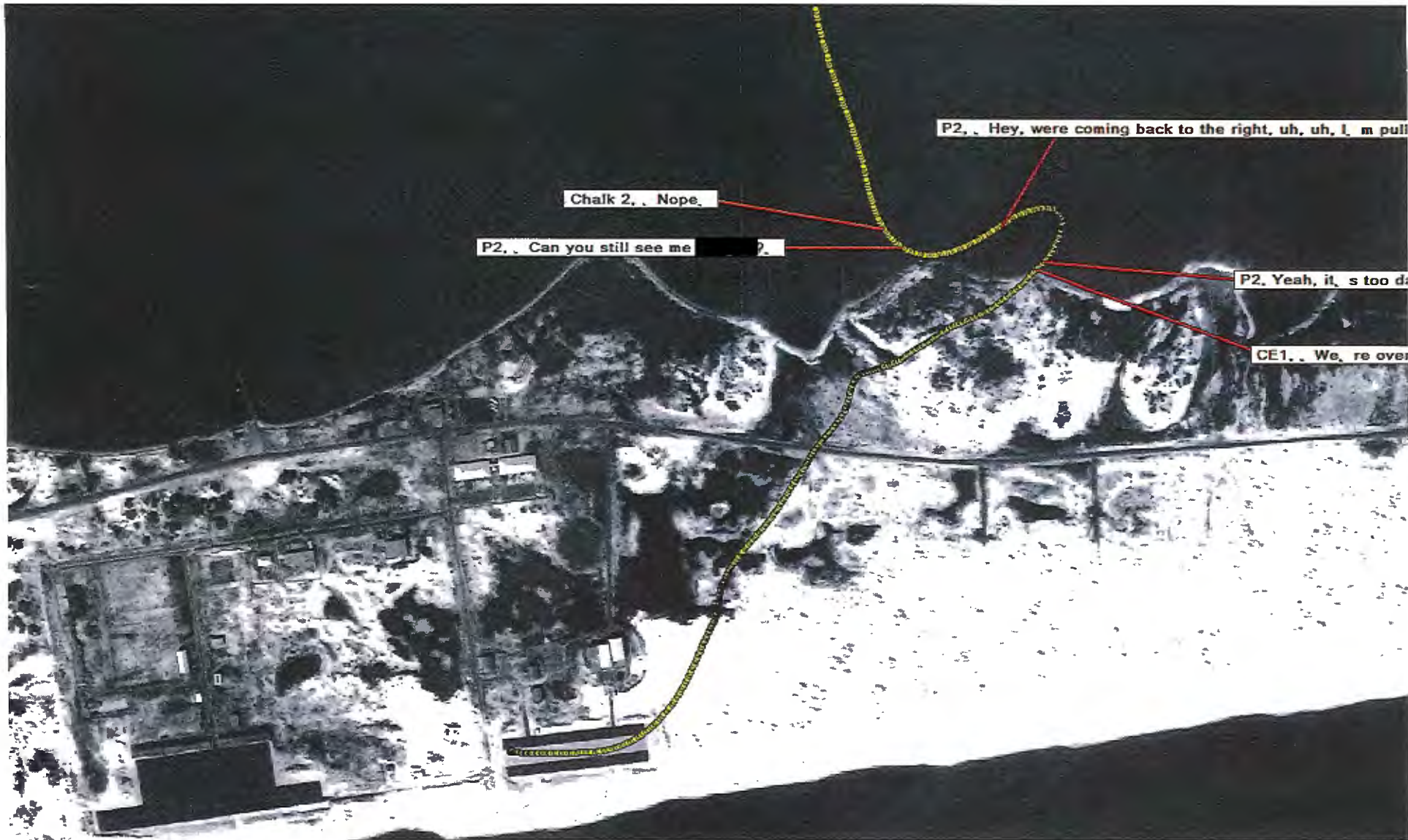


MOJO69 Flight Path
Range rings are Statute Miles



MOJO69 Flight Path
Range rings are Statute Miles





P2. . Hey, were coming back to the right, uh, uh, I m pull

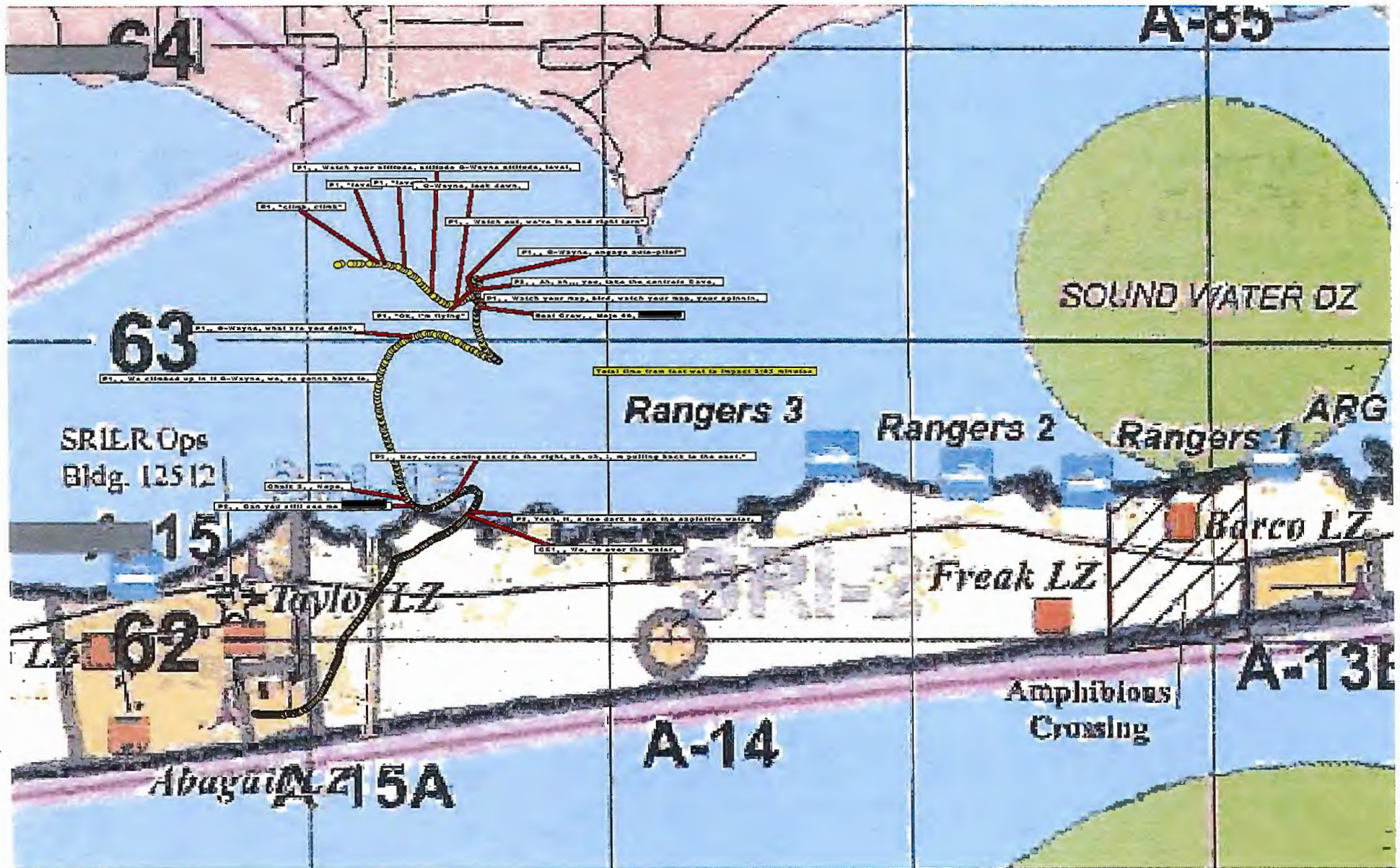
Chalk 2. . Nope.

P2. . Can you still see me [redacted]?

P2. Yeah, it, s too d

CE1. . We, re over





G4

A-85

G3

SOUND WATER DZ

Rangers 3

Rangers 2

Rangers 1

ARG

SRIER Ops
Bldg. 12512

Total time from last wat to impact 1:05 minutes

G2

Taylor LZ

Barco LZ

Freak LZ

G1

Abagui LZ

A-14

Amphibious
Crossing

A-13E